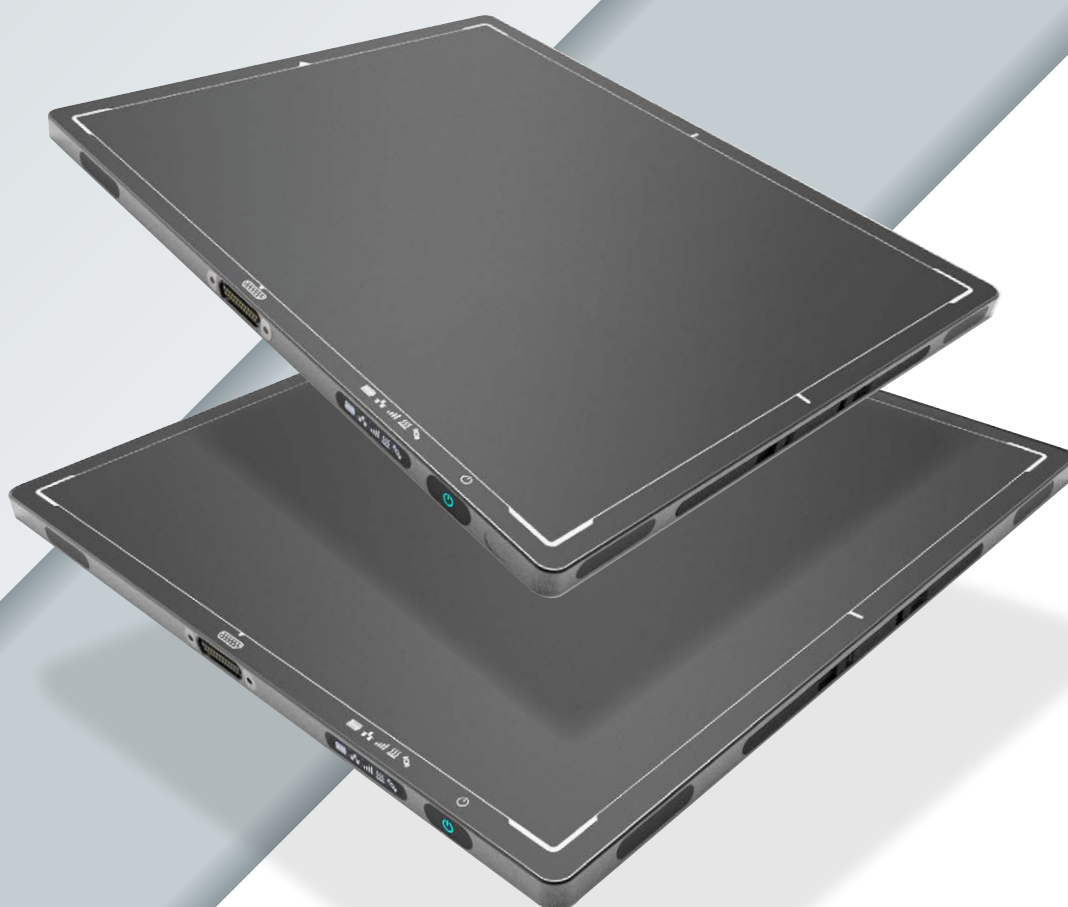


# **LIGHTWEIGHT & WIRELESS** **DRA 3543/4343 NDT**

*HIGH-RESOLUTION FLAT PANEL DETECTORS*



*Digital Intelligence - Ready to Change.*  
[www.duerr-ndt.com](http://www.duerr-ndt.com)



## Technical data

## DRA 3543 NDT

## DRA 4343 NDT

<b>Active area</b>	350 x 426 mm (14 x 17")	432 x 432 mm (17 x 17")
<b>Dimensions</b> (H x W x D)	384 x 460 x 15.5 mm	460 x 460 x 15.5 mm
<b>Weight</b>	3.2 kg (7 lbs)	3.8 kg (8.4 lbs)
<b>Number of pixels</b>	3524 x 4288	4288 x 4288
<b>Image transfer time</b> (wired/wireless)	0.5/3 s	0.6/3.6 s
<b>Pixel pitch</b>	100 µm	
<b>Scintillator options</b>	CsI, GOS	
<b>ADC</b>	16-bit	
<b>On-board memory</b>	1 GB DDR3, 8 GB SDHC card	
<b>Interface</b>	Gigabit Ethernet (TCP-IP), WLAN (802.11n @ 5 GHz)	
<b>Battery</b>	Lithium-ion, 46.6 Wh, charging time 3h	
<b>Operating conditions</b>	10 to 35°C (50 to 95°F), 20 to 75 % humidity	
<b>Housing</b>	Aluminum frame, carbon-fiber entrance window	
<b>Software</b>	DÜRR NDT D-Tect 9.7 or higher	

## Important features

- ✓ High resolution 100 µm pixel pitch (5.0 lp/mm)
- ✓ Automatic Exposure Detection (AED)
- ✓ Wi-Fi interface (Station and Access Point modes)
- ✓ OLED display with Wi-Fi, LAN, battery, and sensor status indicators
- ✓ Docking connector for Gigabit Ethernet, power and data sync
- ✓ On-board pixel corrections and image storage
- ✓ Dynamic mode with 8 fps at 200 µm resolution
- ✓ Fast image preview



Status display



Docking connector



Two-bay battery charger